

MLS Area RRE

Listings	This Month			Year-to-Date		
	Sep 2021	Sep 2020	Change	2021	2020	Change
Single Family Sales	156	156	--	1,227	1,215	+1.0%
Condo/TH Sales	6	9	-33.3%	86	55	+56.4%
Total Sales	162	165	-1.8%	1,313	1,270	+3.4%
New Homes Only	2	12	-83.3%	22	68	-67.6%
Resale Only	160	153	+4.6%	1,291	1,202	+7.4%
Sales Volume	\$76,638,929	\$55,231,521	+38.8%	\$608,385,571	\$410,661,636	+48.1%
New Listings	156	127	+22.8%	1,607	1,371	+17.2%
Pending	114	133	-14.3%	135	1,345	-90.0%
Withdrawn	13	4	+225.0%	80	74	+8.1%
Expired	6	2	+200.0%	17	30	-43.3%
Months of Inventory	0.8	0.3	+144.1%	N/A	N/A	--

Average	This Month			Year-to-Date		
	Sep 2021	Sep 2020	Change	2021	2020	Change
List Price	\$460,616	\$334,378	+37.8%	\$427,123	\$324,352	+31.7%
List Price/SqFt	\$211	\$152	+38.3%	\$191	\$147	+30.4%
Sold Price	\$473,080	\$334,736	+41.3%	\$463,355	\$323,356	+43.3%
Sold Price/SqFt	\$217	\$153	+42.0%	\$209	\$146	+42.5%
Sold Price / Orig LP	102.1%	100.0%	+2.1%	109.6%	99.3%	+10.4%
Days on Market	15	24	-40.2%	9	29	-68.1%

Median	This Month			Year-to-Date		
	Sep 2021	Sep 2020	Change	2021	2020	Change
List Price	\$417,000	\$306,500	+36.1%	\$385,000	\$295,000	+30.5%
List Price/SqFt	\$207	\$150	+38.2%	\$191	\$147	+30.3%
Sold Price	\$433,500	\$305,000	+42.1%	\$421,000	\$295,000	+42.7%
Sold Price/SqFt	\$214	\$150	+42.4%	\$208	\$146	+42.7%
Sold Price / Orig LP	102.0%	100.0%	+2.0%	108.0%	100.0%	+8.0%
Days on Market	8	6	+33.3%	5	8	-37.5%

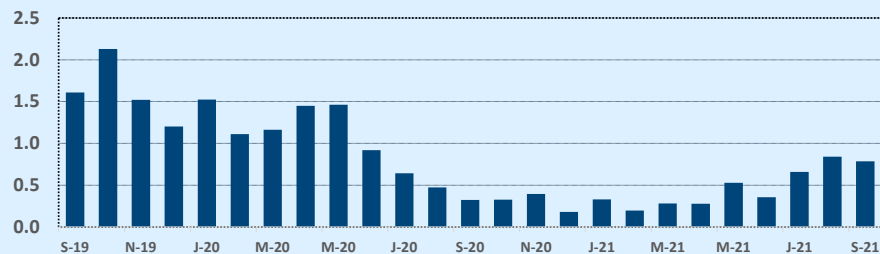
Residential Statistics

Independence Title

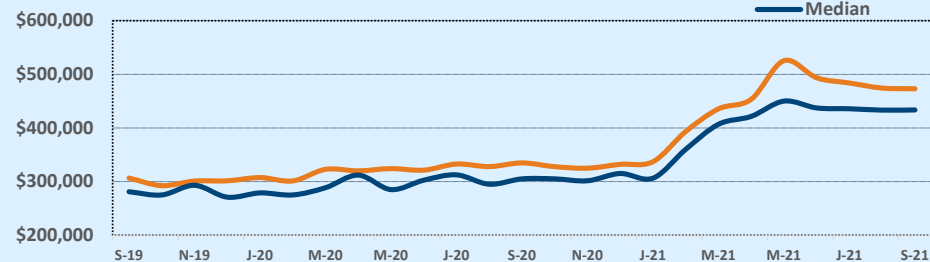
September 2021

Price Range	This Month			Year-to-Date		
	New	Sales	DOM	New	Sales	DOM
\$149,999 or under	--	--	--	--	--	--
\$150,000- \$199,999	1	--	--	11	16	38
\$200,000- \$249,999	2	--	--	51	28	5
\$250,000- \$299,999	9	4	4	160	81	8
\$300,000- \$349,999	21	23	15	240	188	9
\$350,000- \$399,999	27	36	10	323	236	9
\$400,000- \$449,999	26	23	13	168	206	7
\$450,000- \$499,999	22	24	21	169	131	9
\$500,000- \$549,999	15	11	17	116	97	9
\$550,000- \$599,999	13	8	15	106	94	9
\$600,000- \$699,999	11	16	12	145	118	9
\$700,000- \$799,999	6	12	18	69	63	11
\$800,000- \$899,999	--	3	15	20	31	13
\$900,000- \$999,999	1	1	33	13	10	14
\$1M - \$1.99M	2	1	14	15	12	23
\$2M - \$2.99M	--	--	--	1	2	23
\$3M+	--	--	--	--	--	--
Totals	156	162	15	1,607	1,313	9

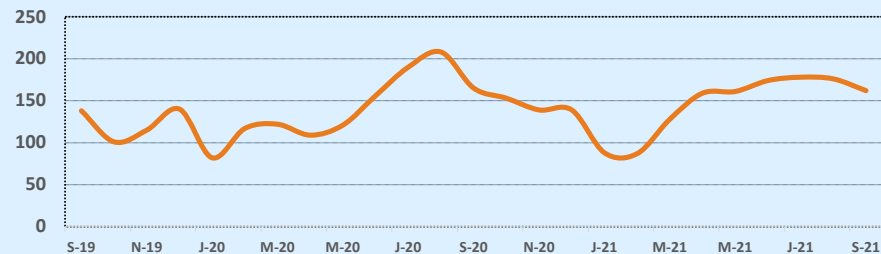
Months of Inventory - Last Two Years



Average & Median Sales Price - Last Two Years



Number of Sales - Last Two Years



Based on information from the Austin Board of REALTORS® (alternatively, from ACTRIS). Neither the Board nor ACTRIS guarantees or is in any way responsible for its accuracy. The Austin Board of REALTORS®, ACTRIS and their affiliates provide the MLS and all content therein "AS IS" and without any warranty, express or implied. Data maintained by the Board or ACTRIS may not reflect all real estate activity in the market.